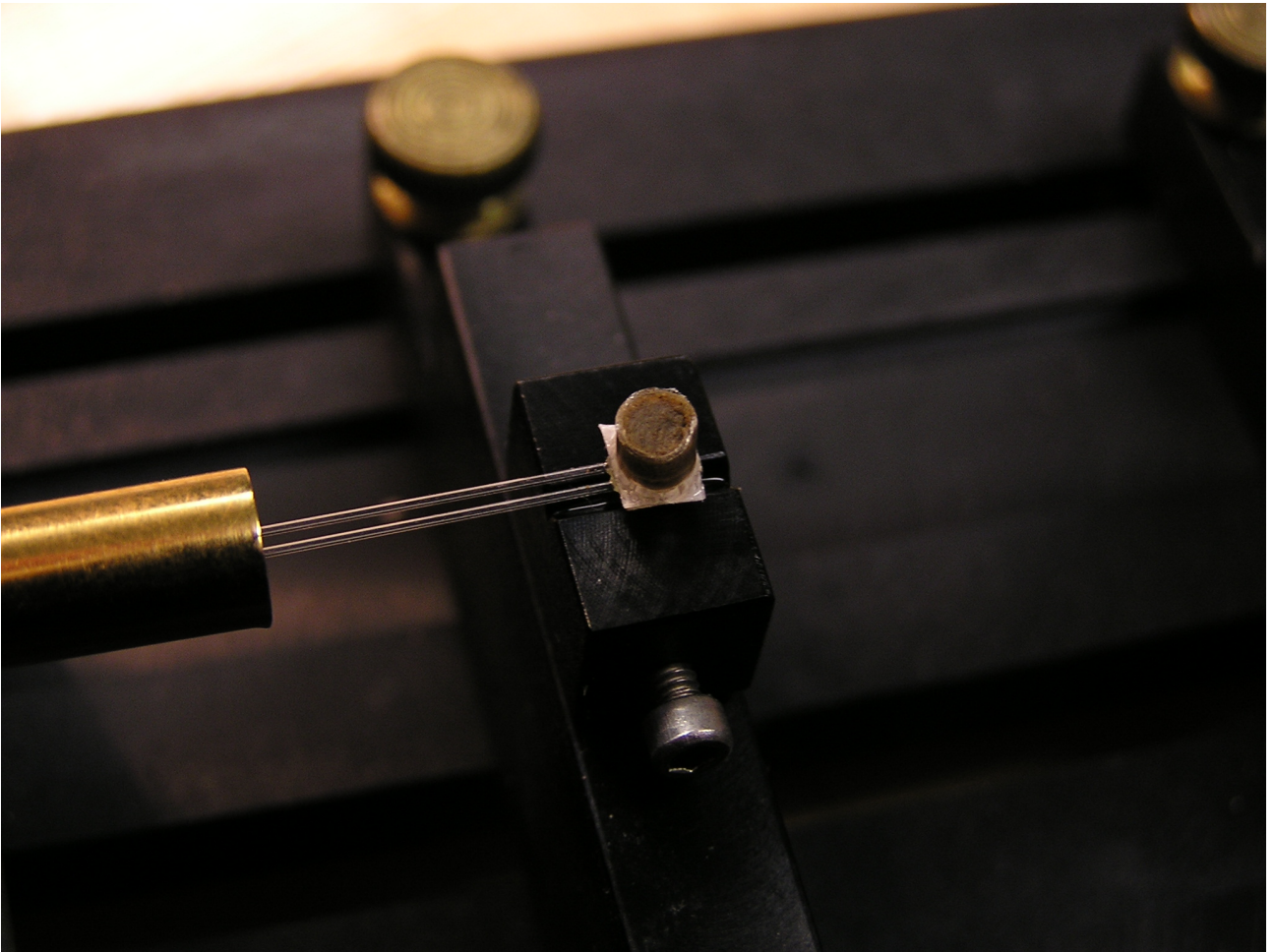
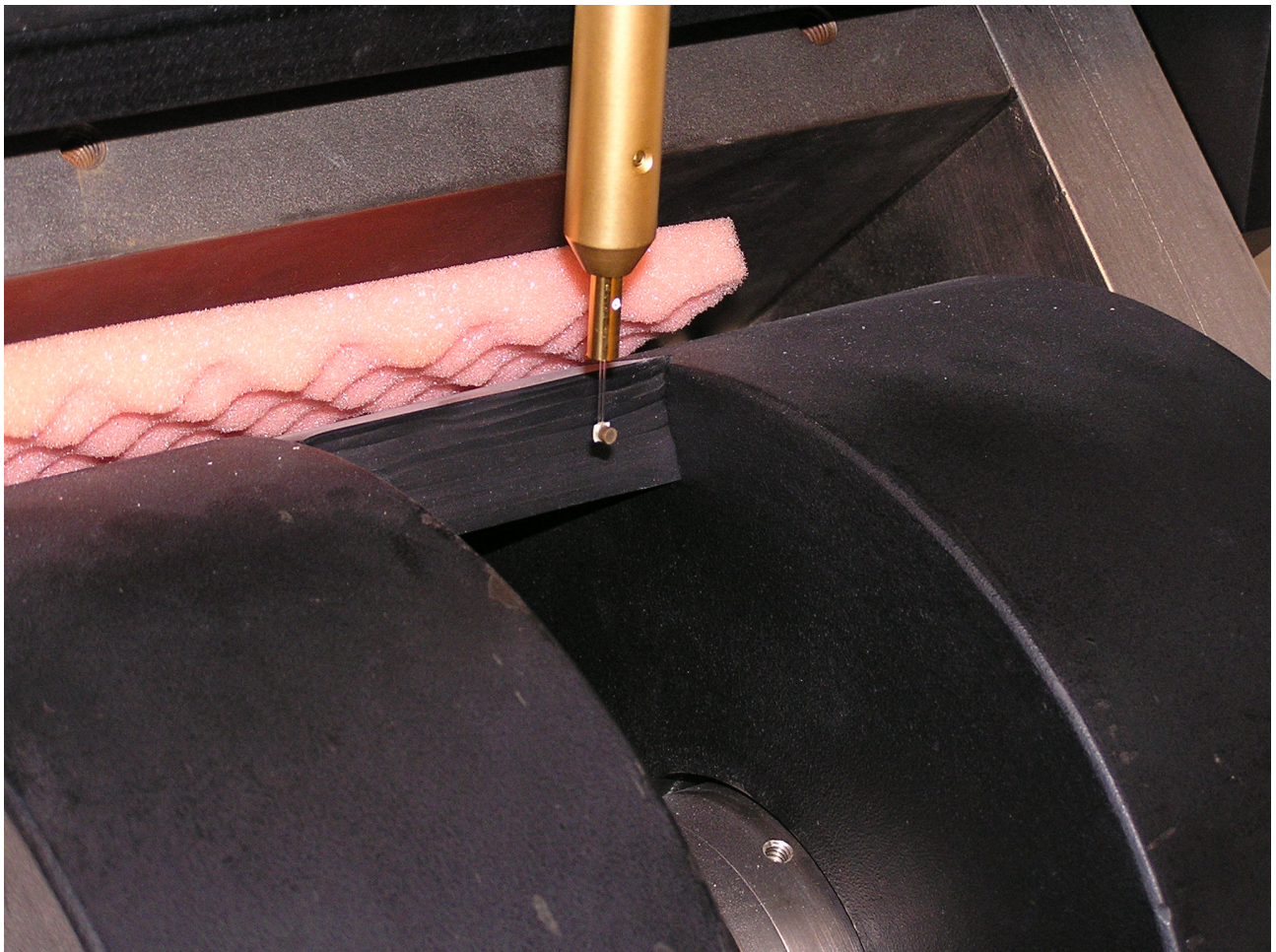


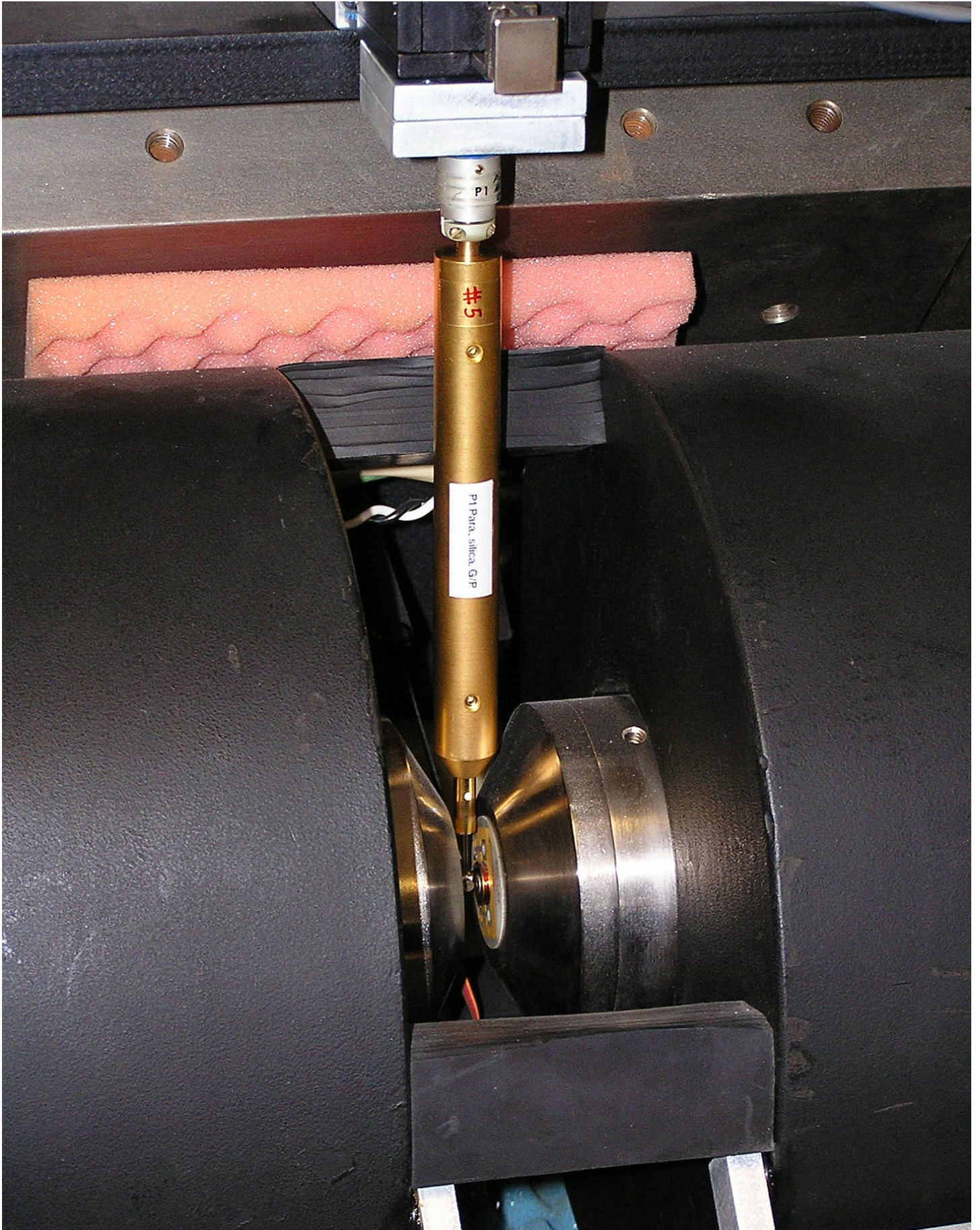
Complete setup of the Alternating Gradient Magnetometer (AGM)



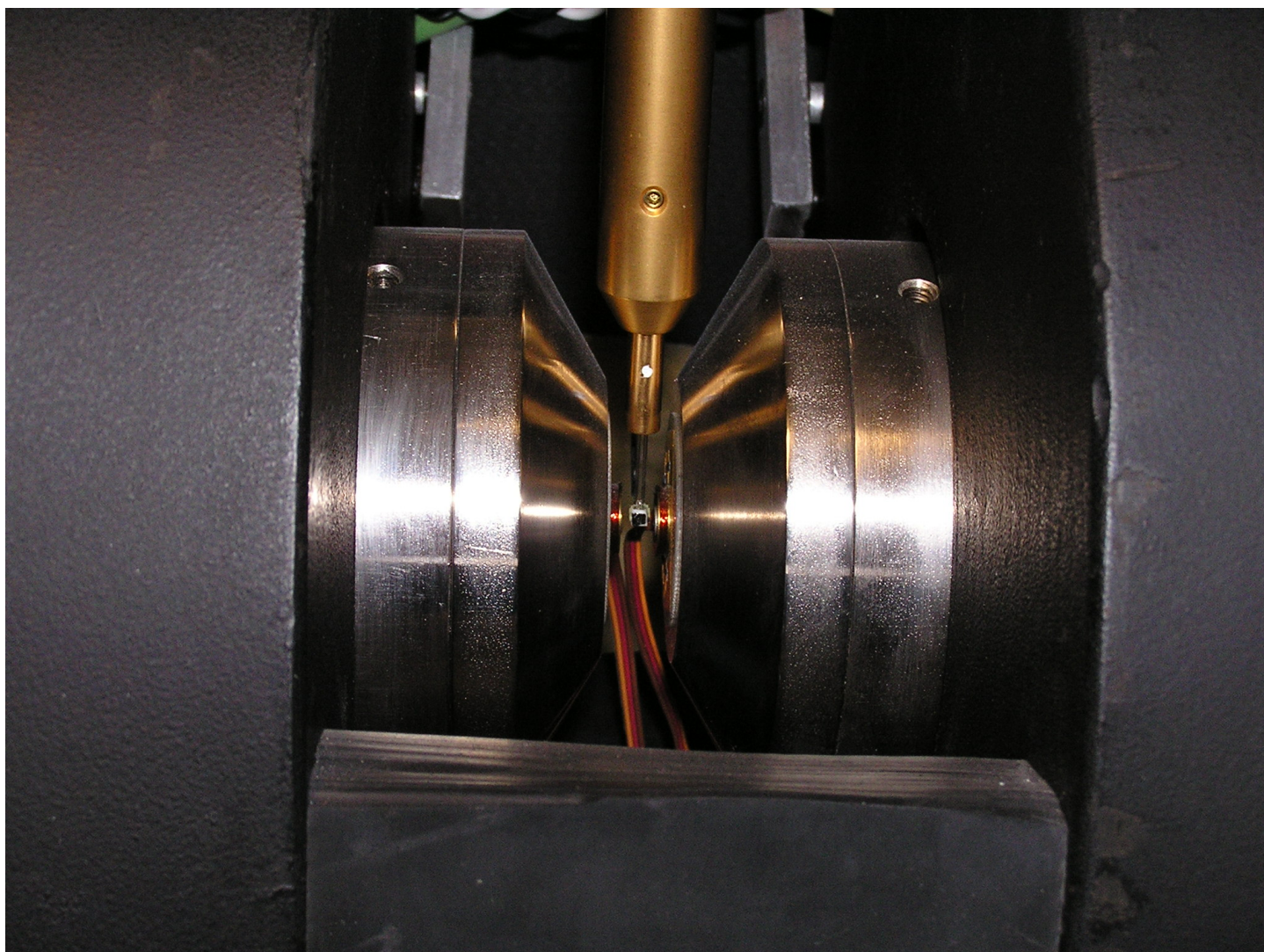
A typical sample attached to the quartz plate of the probe



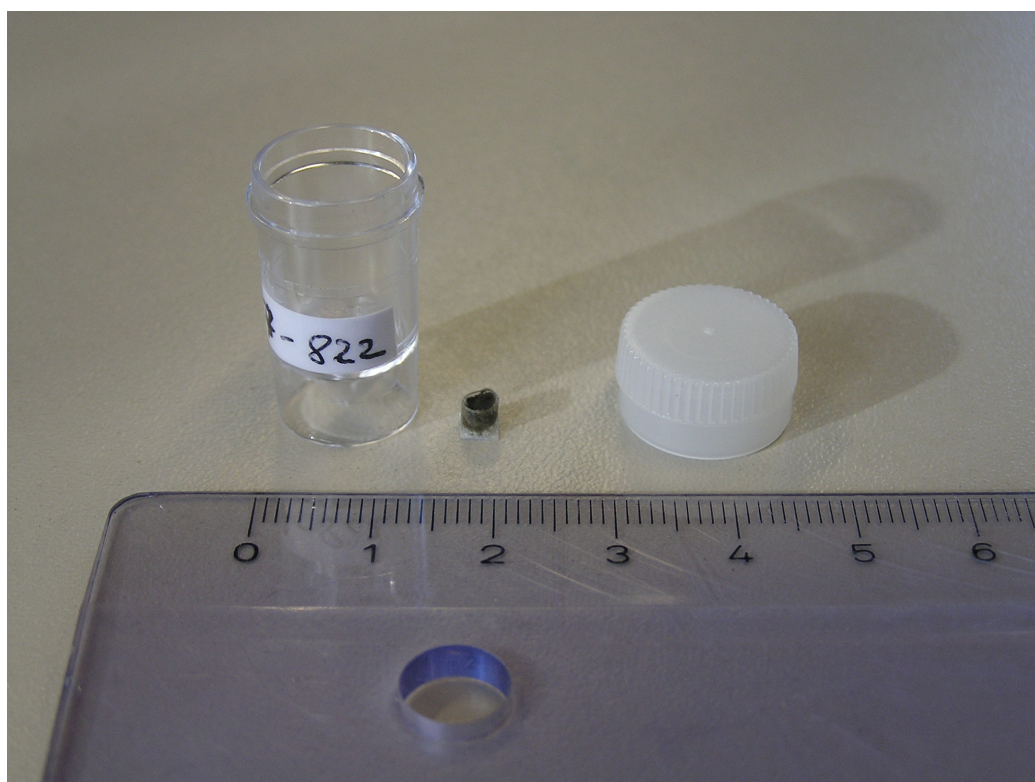
The probe mounted to the AGM, but not yet in working position



Pick-up probe mounted



A sample between within the gradient coils



A typical sample, ~20 mg

# Automatic IRM acquisition with 4" MicroMag and new software (c/o Princeton Measurements)

